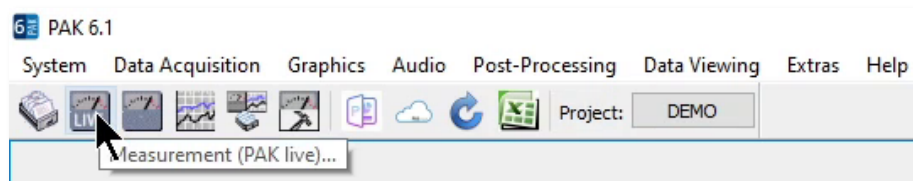
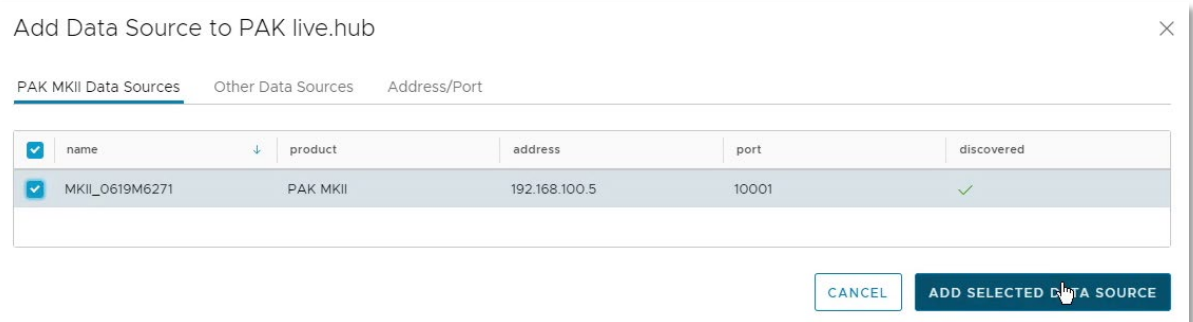
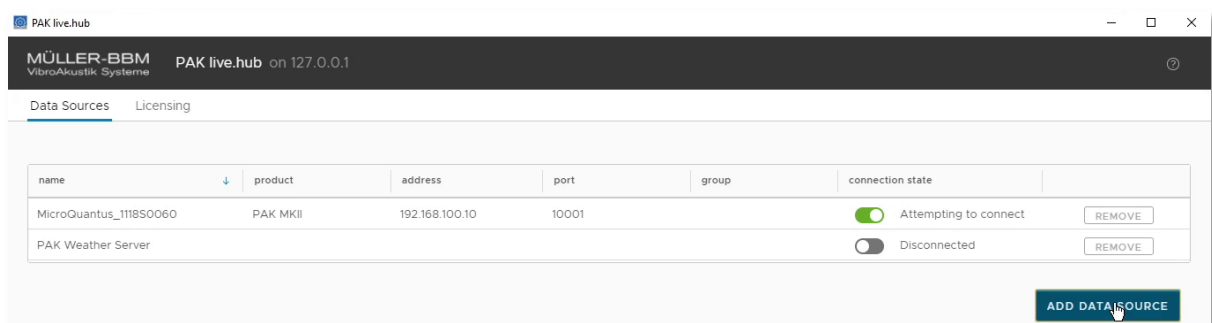
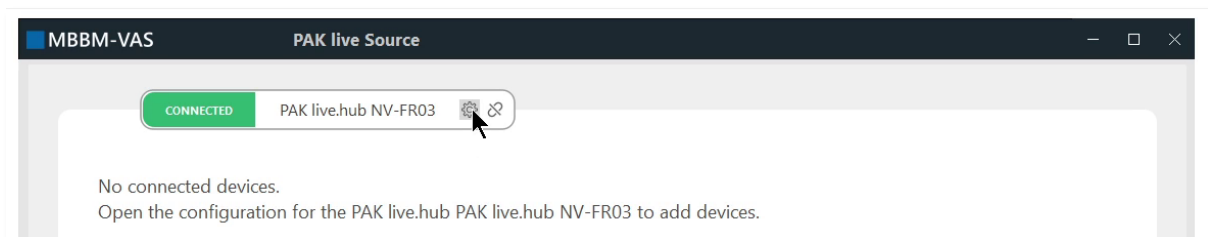
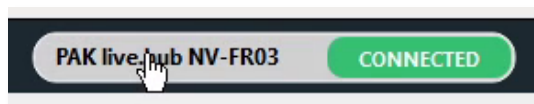


PAK LIVE MEASUREMENT INTERFACE

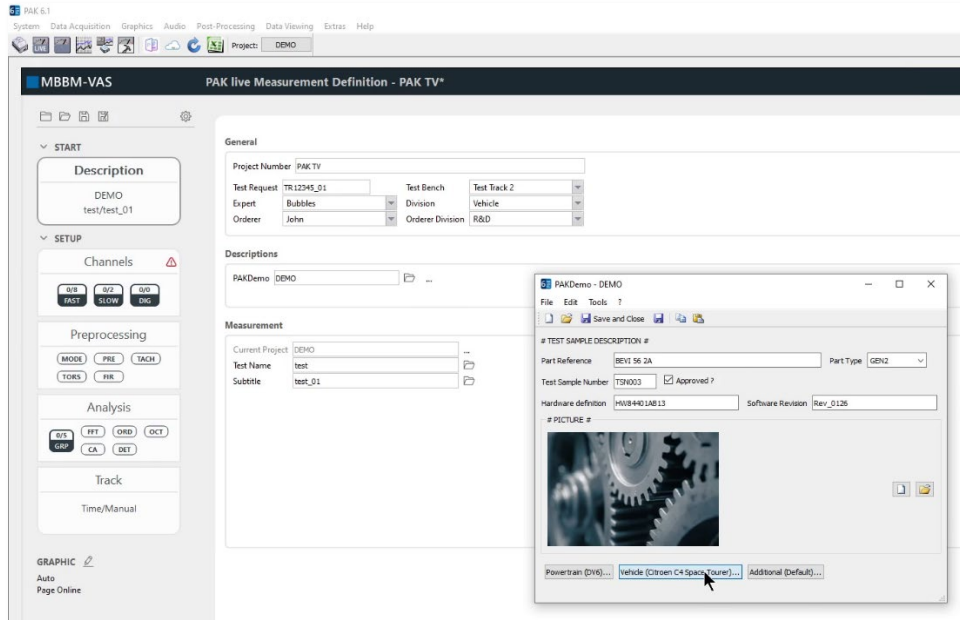
1. OPENING OF THE PAK LIVE INTERFACE



2. CHOOSING & ADDING A DATA SOURCE

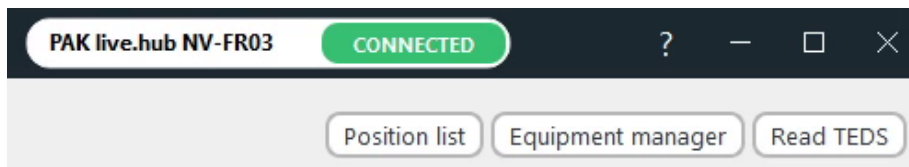


3. DESCRIPTIVE DATA

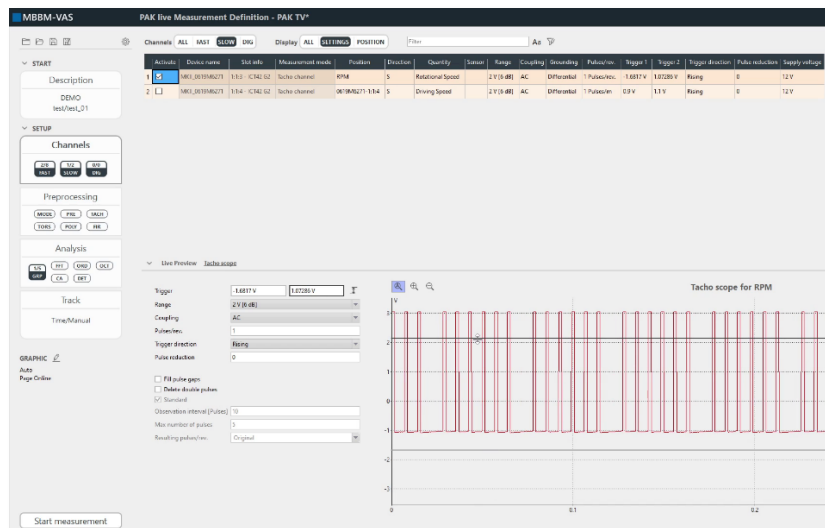


4. CHANNEL SETTINGS

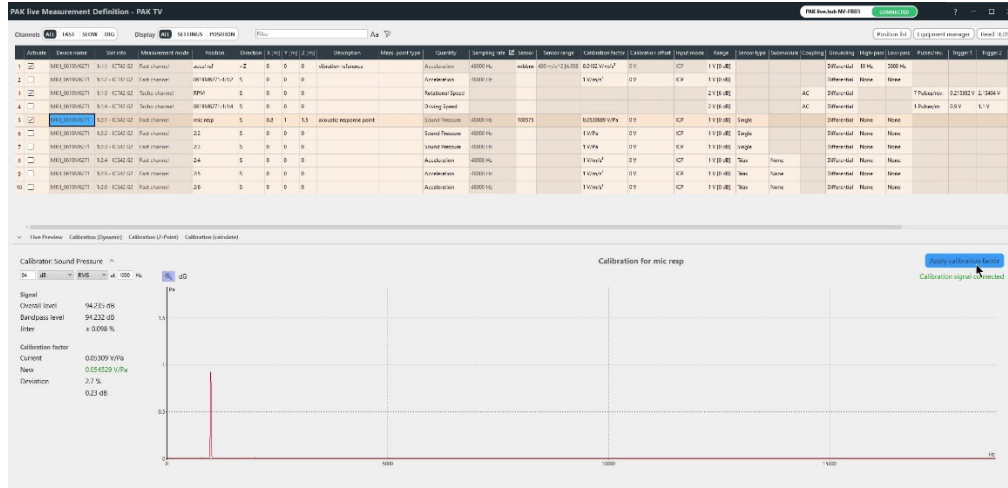
A. TEDS / EQUIPMENT MANAGER / POSITION LIST



B. TACHO SCOPE



C. CALIBRATION



D. SAMPLING RATE

Meas. point type	Quantity	Sampling rate	Sensor	Sensor range	Calibration factor
	Acceleration	48000 Hz	mbbm	490 m/s ² [4.998]	0.0102 V/m/s ²
	Acceleration	48000 Hz			1 V/m/s ²

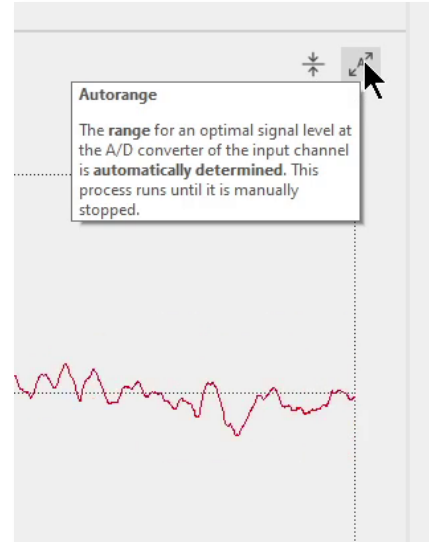
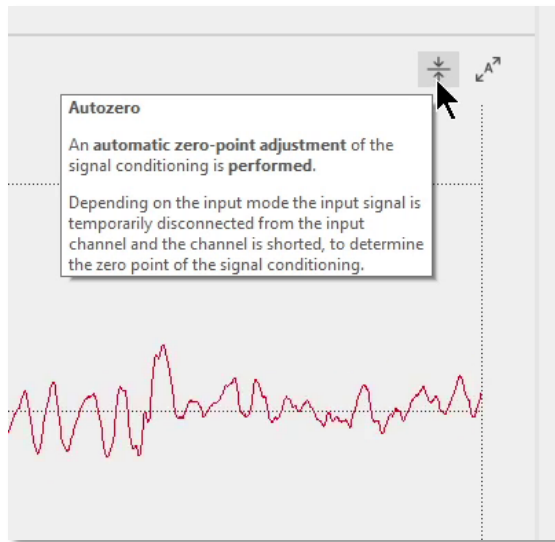
Sampling Rate Configuration

Devices: MKII_0619M6271 (SN: 0619M6271) **2 CHANGES**

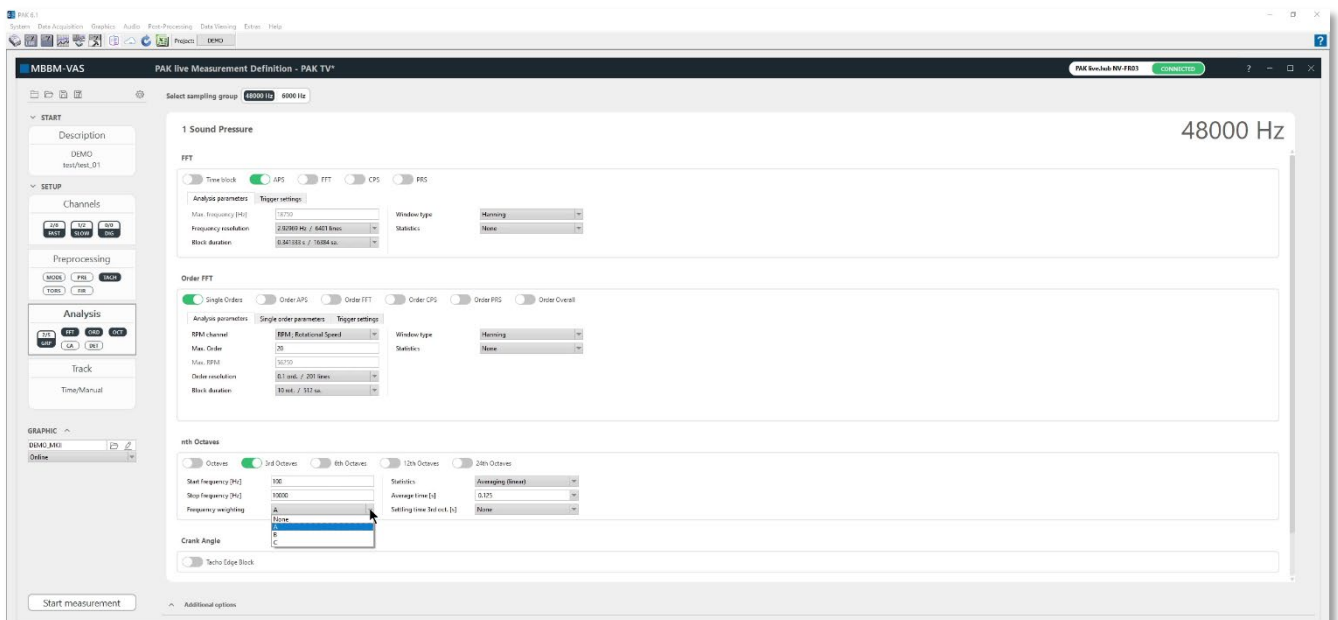
Sampling rates for MKII_0619M6271 | Data rate: 1.06 of 10 MB/s

Slot info	Position	Direction	Quantity	Sampling rate
1:1:1 - ICT42 G:	accel ref	+Z	Acceleration	6000 Hz (2)
1:1:2 - ICT42 G:	0619M6271-1:1:	S	Acceleration	6000 Hz
1:1:3 - ICT42 G:	RPM	S	Rotational Speed	
1:1:4 - ICT42 G:	0619M6271-1:1:	S	Driving Speed	
1:2:1 - ICS42 G2	mic resp	S	Sound Pressure	48000 Hz
1:2:2 - ICS42 G2	2:2	S	Sound Pressure	48000 Hz
1:2:3 - ICS42 G2	2:3	S	Sound Pressure	48000 Hz
1:2:4 - ICS42 G2	2:4	S	Acceleration	48000 Hz
1:2:5 - ICS42 G2	2:5	S	Acceleration	48000 Hz
1:2:6 - ICS42 G2	2:6	S	Acceleration	48000 Hz

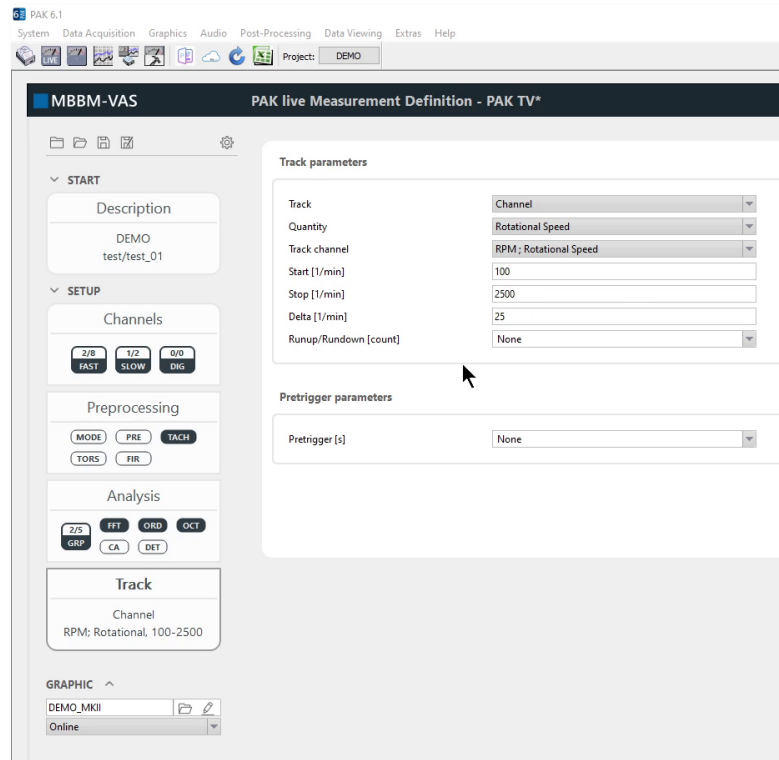
E. AUTOZERO / AUTORANGE PER CHANNEL



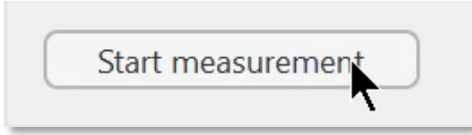
5. ANALYSIS SETTINGS



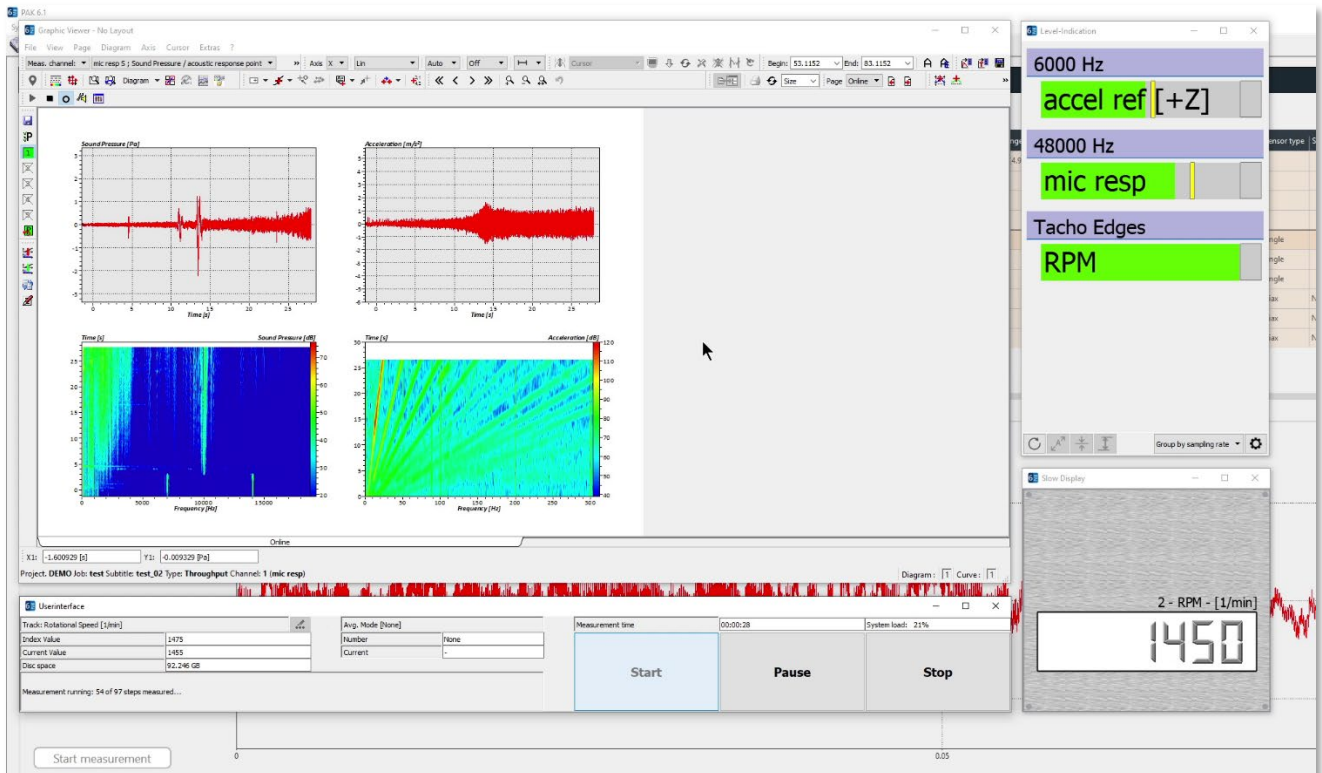
6. TRACK PARAMETERS



7. START MEASUREMENT



Start measurement



Subscribe to our [Newsletter](#) to get the latest stories and access the [PAK Tips Archive](#). Sign up for our video and presentation library [myVAS](#) to stay up to date on our innovations.

Müller-BBM VibroAkustik Systeme GmbH | Helmut-A.-Müller-Straße 1-5 | 82152 Planegg (Germany)
Tel. +49 89 264860 – 0 | info.de@mbbm-vas.com | www.mbbm-vas.com

