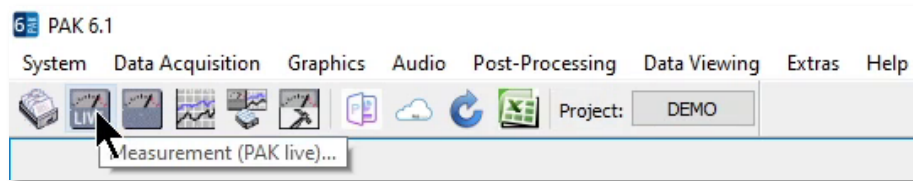
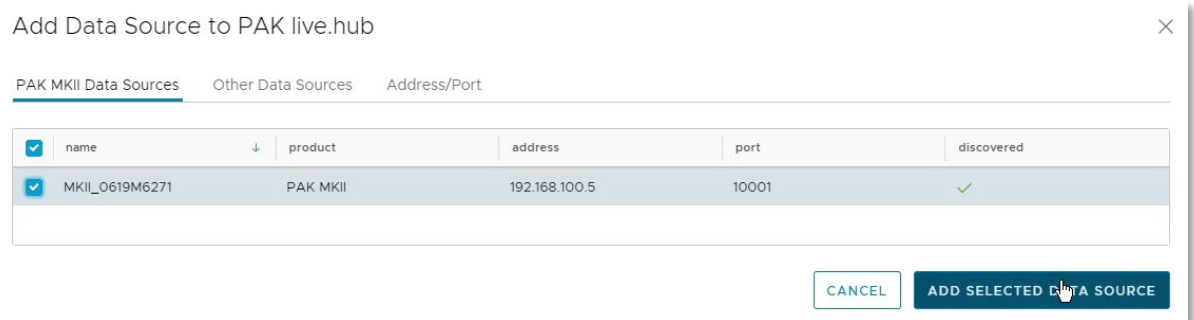
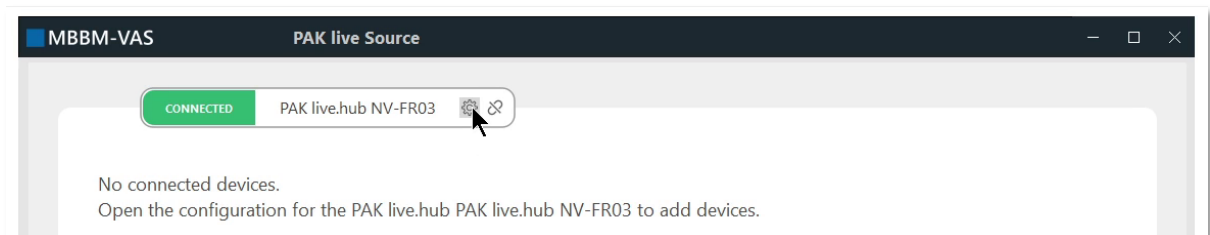


INTERFACE DE MESURE PAK LIVE

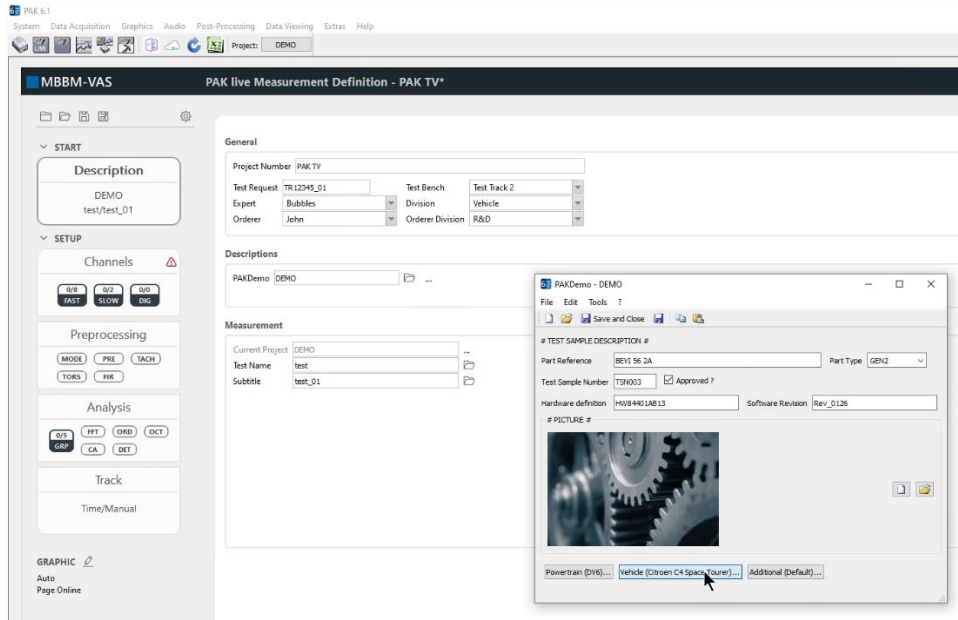
1. OUVERTURE DE L'INTERFACE PAK LIVE



2. CHOIX & AJOUT D'UNE SOURCE DE DONNEES

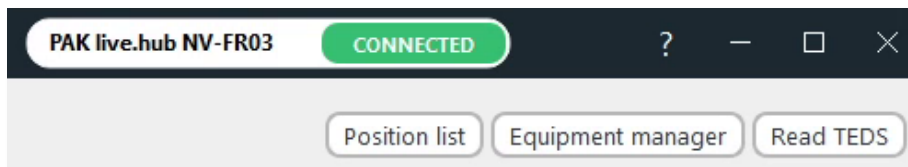


3. DONNEES DESCRIPTIVES DE L'ESSAI

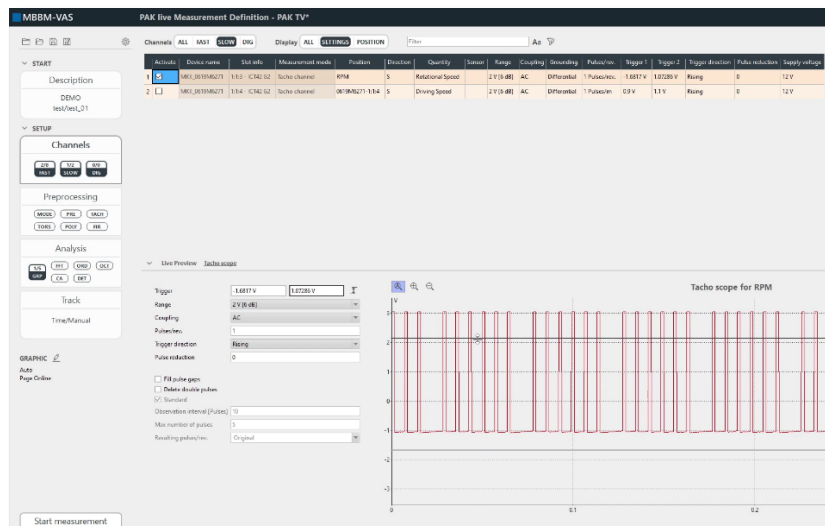


4. PARAMETRAGE DES VOIES

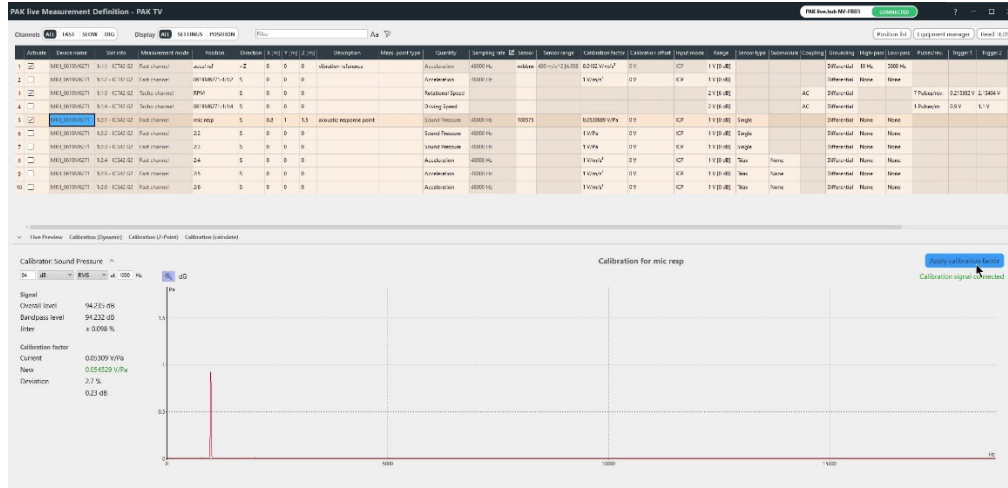
A. TEDS / EQUIPMENT MANAGER / POSITION LIST



B. TACHO SCOPE



C. CALIBRATION



D. SAMPLING RATE

Meas. point type	Quantity	Sampling rate	Sensor	Sensor range	Calibration factor
	Acceleration	48000 Hz	mbbm	490 m/s ² [4.998]	0.0102 V/m/s ²
	Acceleration	48000 Hz			1 V/m/s ²

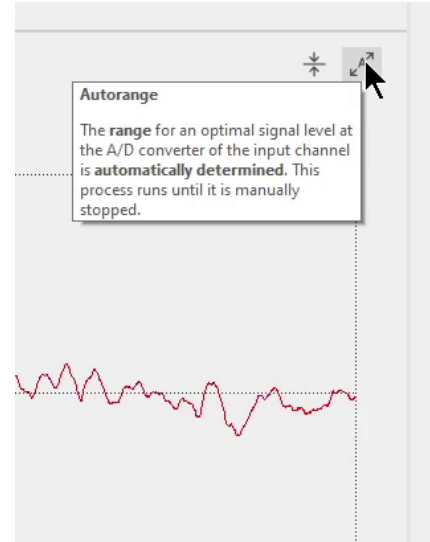
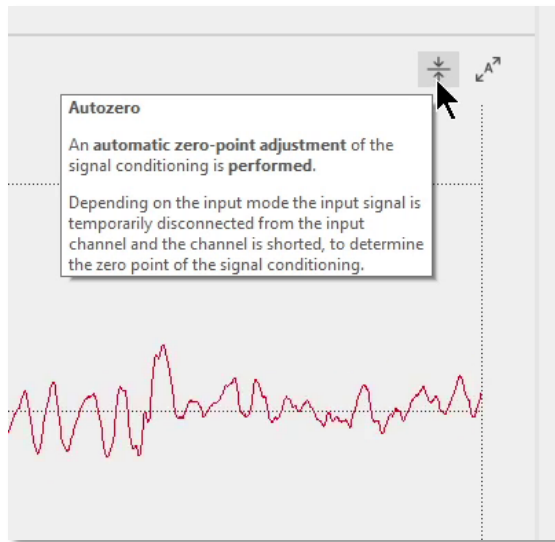
Sampling Rate Configuration

Devices: MKII_0619M6271 (SN: 0619M6271) **2 CHANGES**

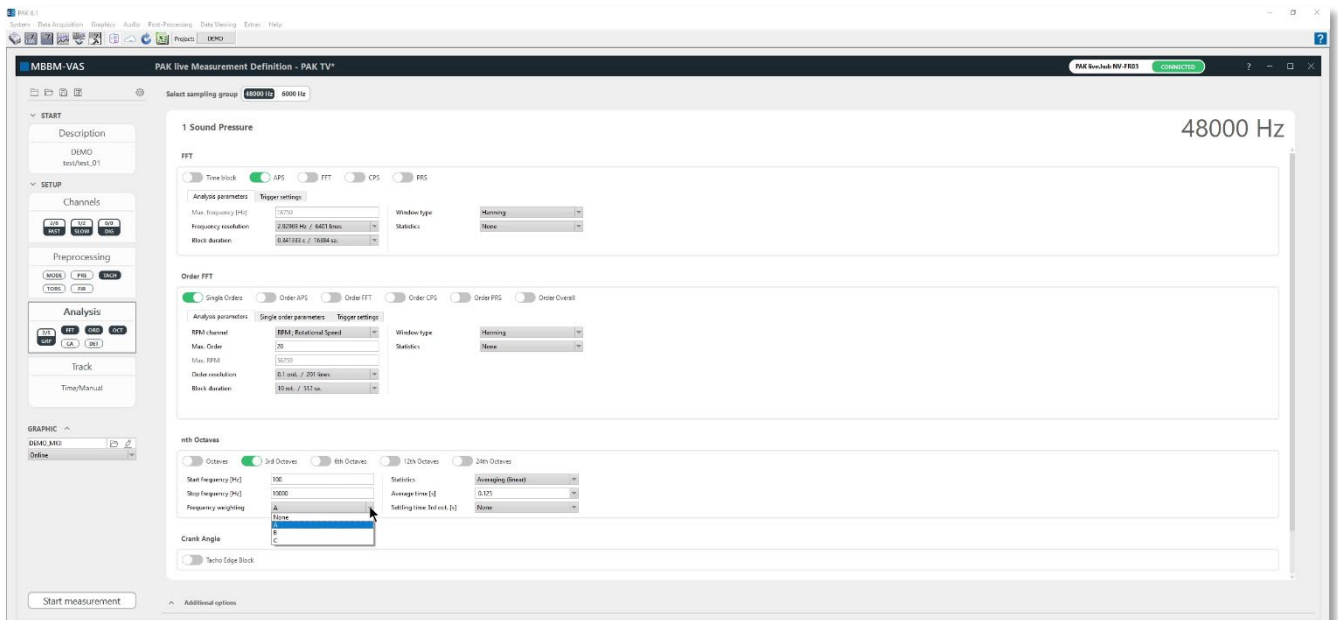
Sampling rates for MKII_0619M6271 | Data rate: 1.06 of 10 MB/s

Slot info	Position	Direction	Quantity	Sampling rate
1:1:1 - ICT42 G:	accel ref	+Z	Acceleration	6000 Hz (2)
1:1:2 - ICT42 G:	0619M6271-1:1:	S	Acceleration	6000 Hz
1:1:3 - ICT42 G:	RPM	S	Rotational Speed	
1:1:4 - ICT42 G:	0619M6271-1:1:	S	Driving Speed	
1:2:1 - ICS42 G:	mic resp	S	Sound Pressure	48000 Hz
1:2:2 - ICS42 G:	2:2	S	Sound Pressure	48000 Hz
1:2:3 - ICS42 G:	2:3	S	Sound Pressure	48000 Hz
1:2:4 - ICS42 G:	2:4	S	Acceleration	48000 Hz
1:2:5 - ICS42 G:	2:5	S	Acceleration	48000 Hz
1:2:6 - ICS42 G:	2:6	S	Acceleration	48000 Hz

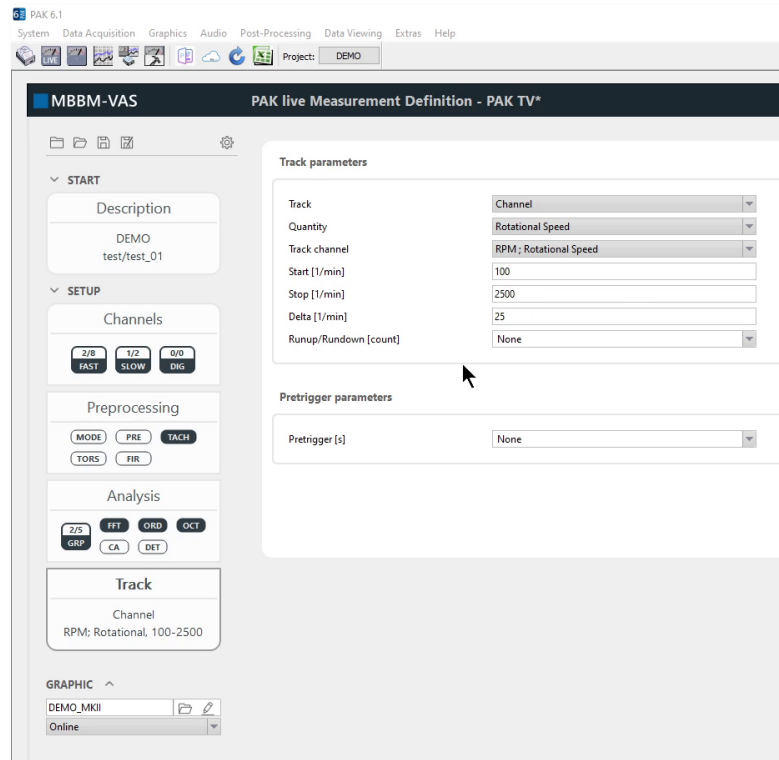
E. AUTOZERO / AUTORANGE PAR VOIE



5. PARAMETRAGE DES ANALYSES

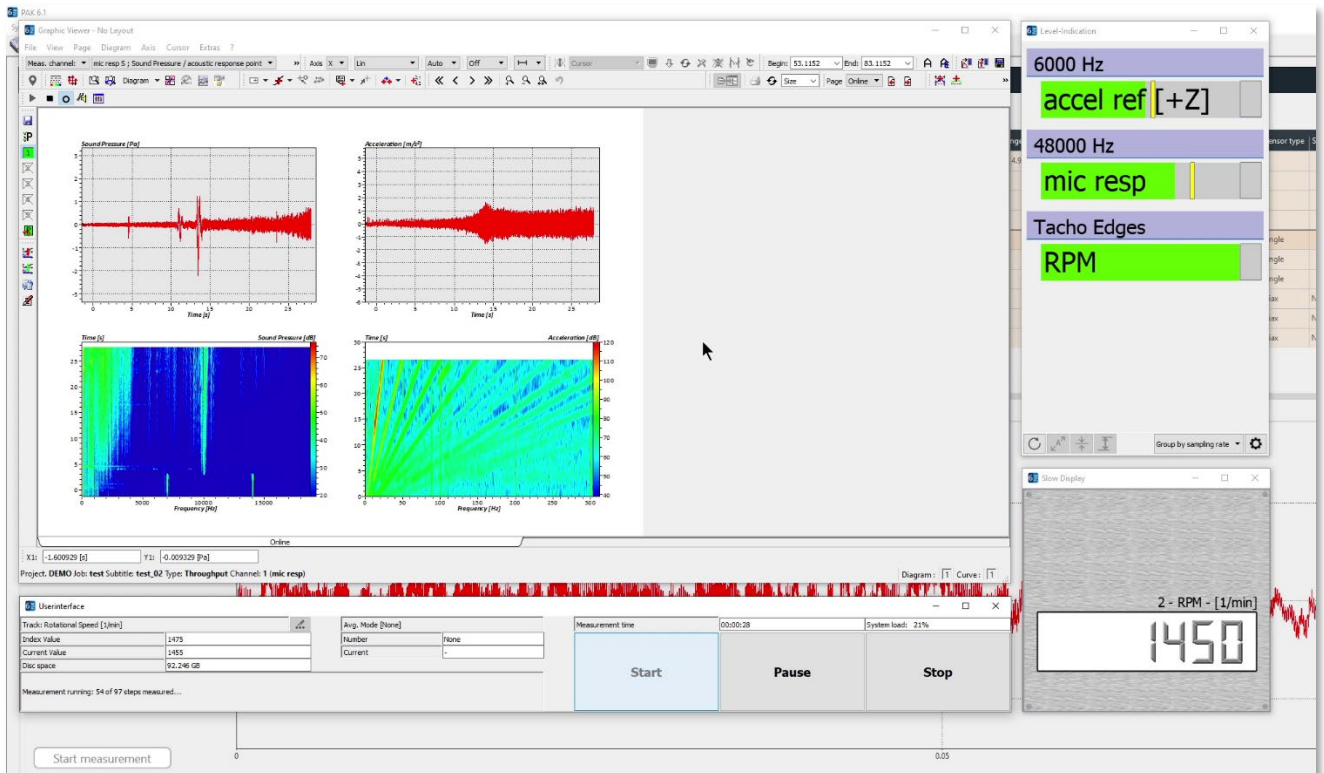


6. PARAMETRAGE DU TRACKING



7. LANCEMENT DE LA MESURE

Start measurement



[Abonnez-vous](#) pour recevoir les dernières informations et avoir accès à [l'Archive des Astuces PAK](#).
Tous nos supports numériques sont disponibles dans la vidéothèque [myVAS](#).

MÜLLER-BBM VAS France | www.mbbm-vas.com/fr

Parc St-Christophe | 10 av. de l'Entreprise | 95865 Cergy-Pontoise Cedex
Tél. 01 34 22 58 84 | Hotline 01 34 22 58 86 | info.fr@mbbm-vas.fr

