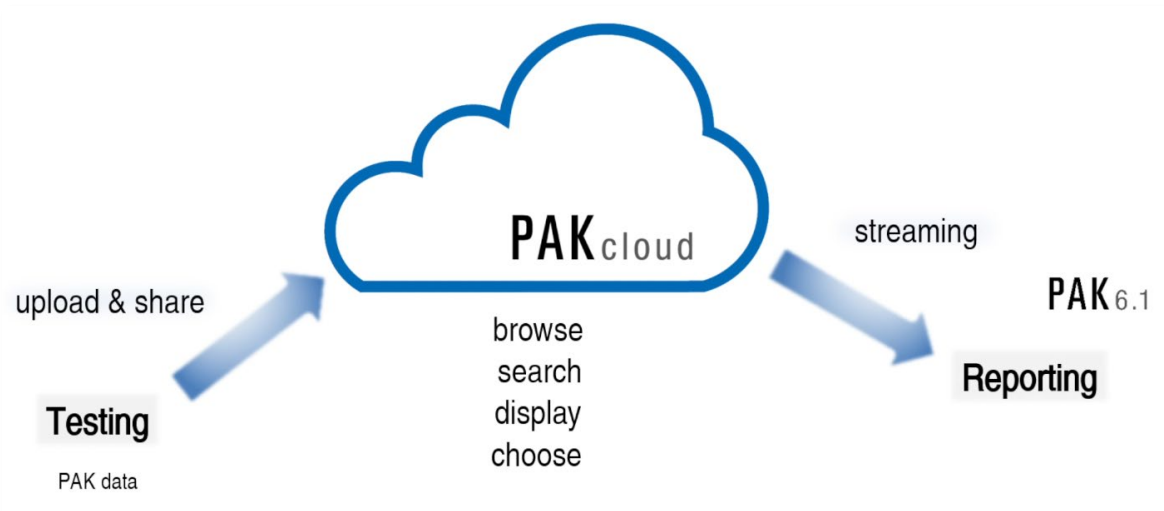
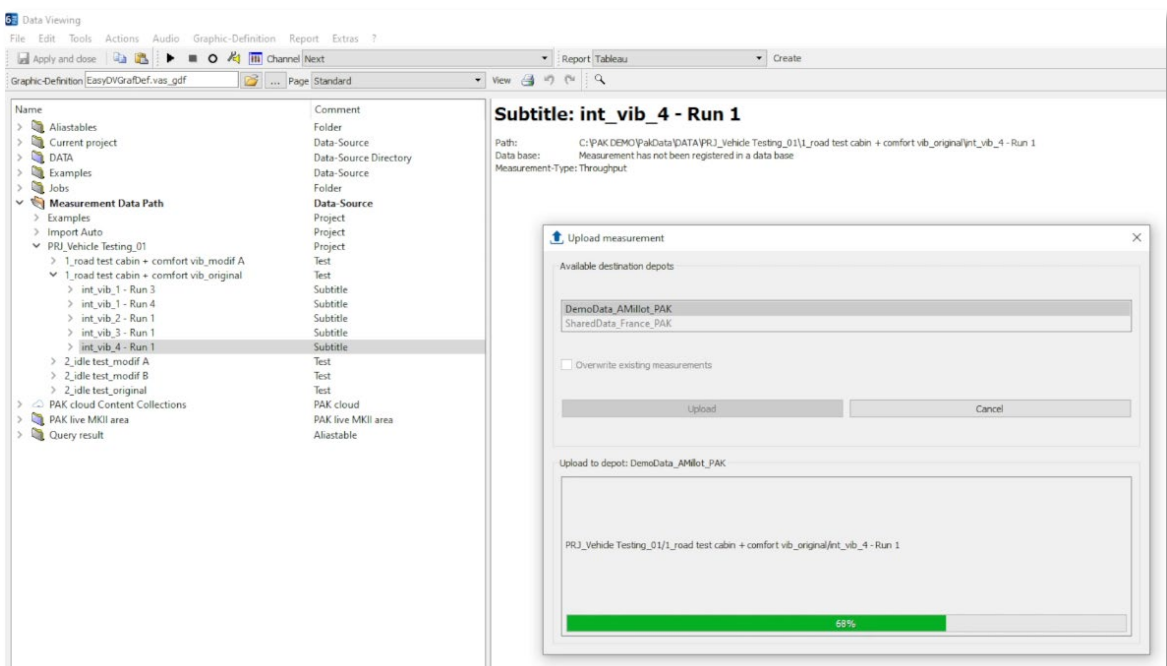


GESTION DES DONNEES AVEC PAK CLOUD

1. EXEMPLE D'UTILISATION DE PAK CLOUD



2. UPLOAD AND SHARE



3. BROWSE AND SEARCH

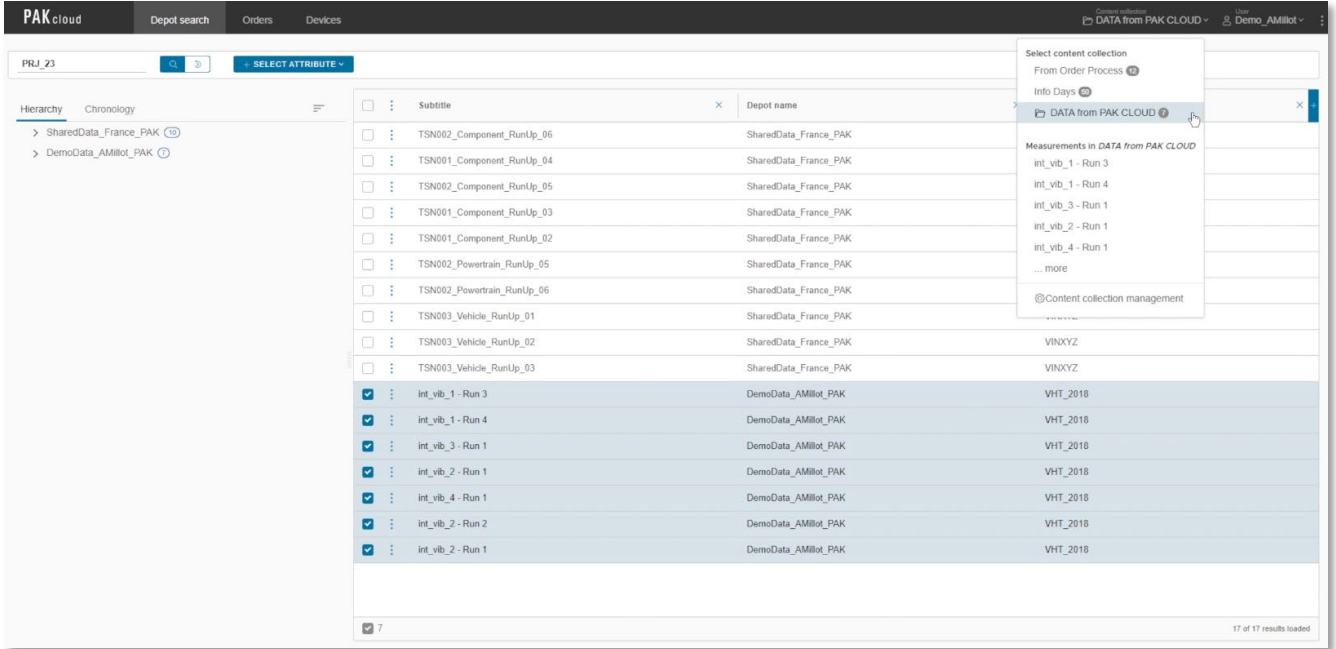
The screenshot shows the PAKcloud interface with a search bar containing 'PRJ_23'. Below the search bar is a table with 17 rows of results. The table has three columns: Subtitle, Depot name, and Registration. The first 13 rows have 'SharedData_France_PAK' in the Depot name column. The last 4 rows have 'DemoData_AMilot_PAK' in the Depot name column and 'VHT_2018' in the Registration column.

Subtitle	Depot name	Registration
TSN002_Component_RunUp_06	SharedData_France_PAK	
TSN001_Component_RunUp_04	SharedData_France_PAK	
TSN002_Component_RunUp_05	SharedData_France_PAK	
TSN001_Component_RunUp_03	SharedData_France_PAK	
TSN001_Component_RunUp_02	SharedData_France_PAK	
TSN002_Powertrain_RunUp_05	SharedData_France_PAK	
TSN002_Powertrain_RunUp_06	SharedData_France_PAK	
TSN003_Vehicle_RunUp_01	SharedData_France_PAK	VINXYZ
TSN003_Vehicle_RunUp_02	SharedData_France_PAK	VINXYZ
TSN003_Vehicle_RunUp_03	SharedData_France_PAK	VINXYZ
int_vib_1 - Run 3	DemoData_AMilot_PAK	VHT_2018
int_vib_1 - Run 4	DemoData_AMilot_PAK	VHT_2018
int_vib_3 - Run 1	DemoData_AMilot_PAK	VHT_2018
int_vib_2 - Run 1	DemoData_AMilot_PAK	VHT_2018
int_vib_4 - Run 1	DemoData_AMilot_PAK	VHT_2018
int_vib_2 - Run 2	DemoData_AMilot_PAK	VHT_2018
int_vib_2 - Run 1	DemoData_AMilot_PAK	VHT_2018

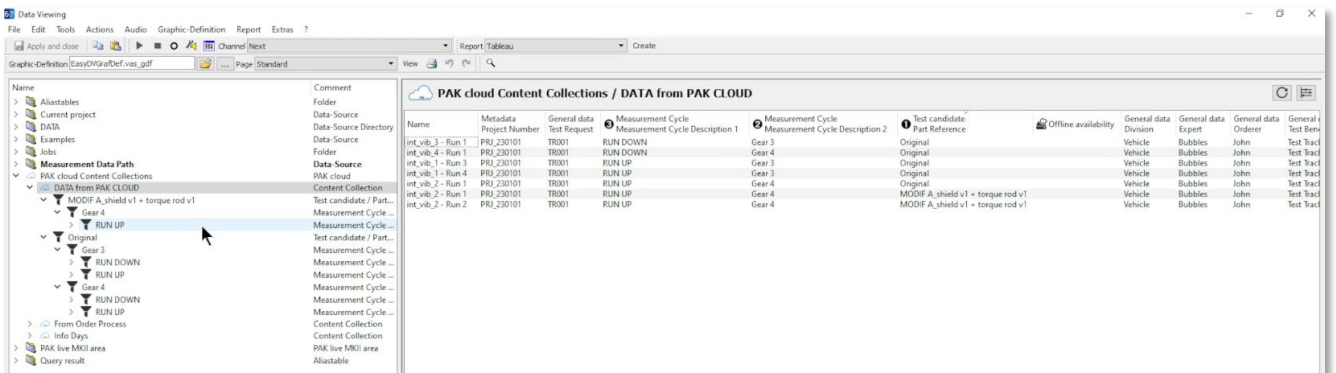
4. DISPLAY

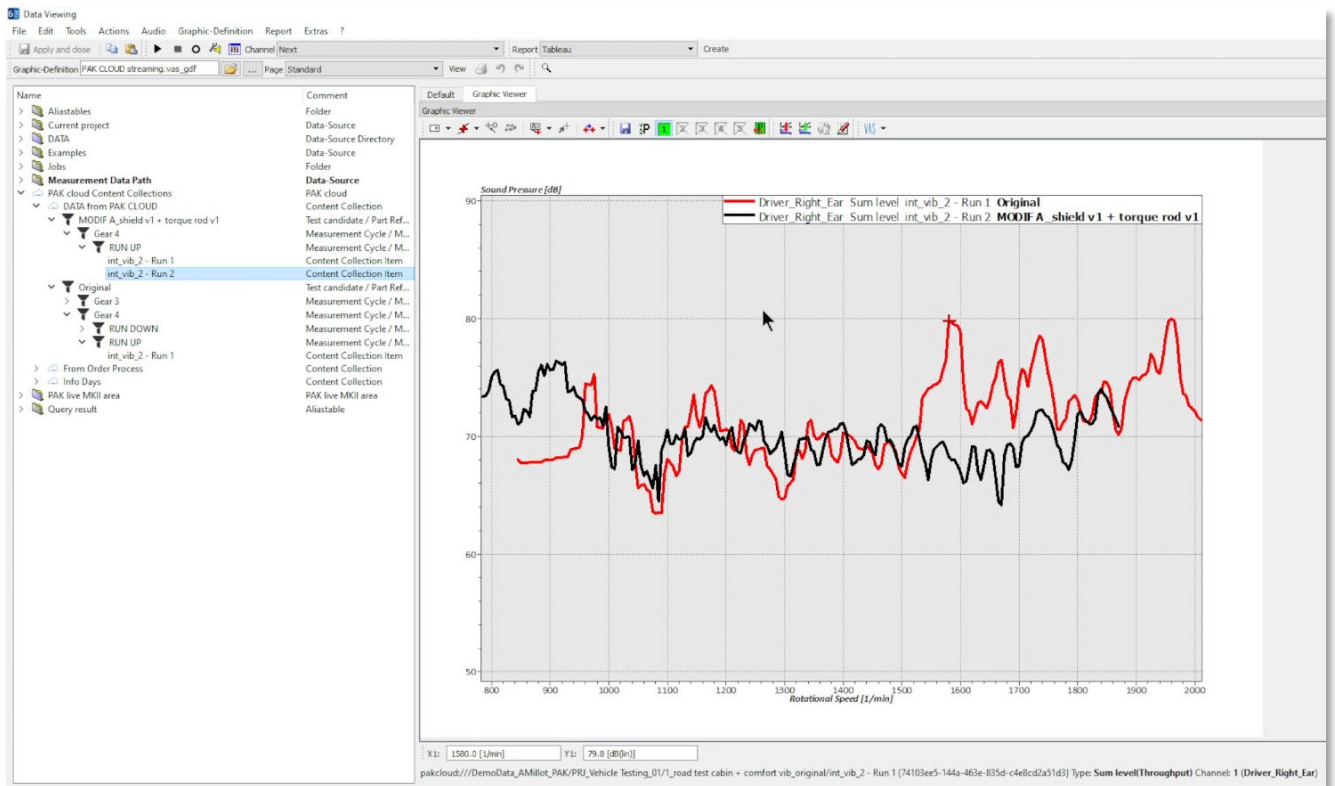
The screenshot shows the Analysis Editor interface. On the left, there are settings for the analysis: Formula (APS), Datasources (ARG: ACCEL - THROUGHPUT), Track Type (Time), Trackdelta (0.1), Trackstart (MIN), Block size (16384), and Window Type (Hanning (HANN)). A 'RUN PROCESSING' button is at the bottom left. The main area displays a spectrogram plot titled 'Stream Processed [+Z] Acceleration - APS'. The X-axis is Frequency [Hz] (100 to 1700) and the Y-axis is Time [s] (1.0 to 12.0). A color scale on the right indicates dB levels from -0.0 to 10.0. The plot shows a complex pattern of energy over time and frequency.

5. CHOOSE



6. STREAMING & REPORTING





[Abonnez-vous](#) pour recevoir les dernières informations et avoir accès à [l'Archive des Astuces PAK](#).
Tous nos supports numériques sont disponibles dans la vidéothèque [myVAS](#).

MÜLLER-BBM VAS France | www.mbbm-vas.com/fr

Parc St-Christophe | 10 av. de l'Entreprise | 95865 Cergy-Pontoise Cedex
Tél. 01 34 22 58 84 | Hotline 01 34 22 58 86 | info.fr@mbbm-vas.fr

