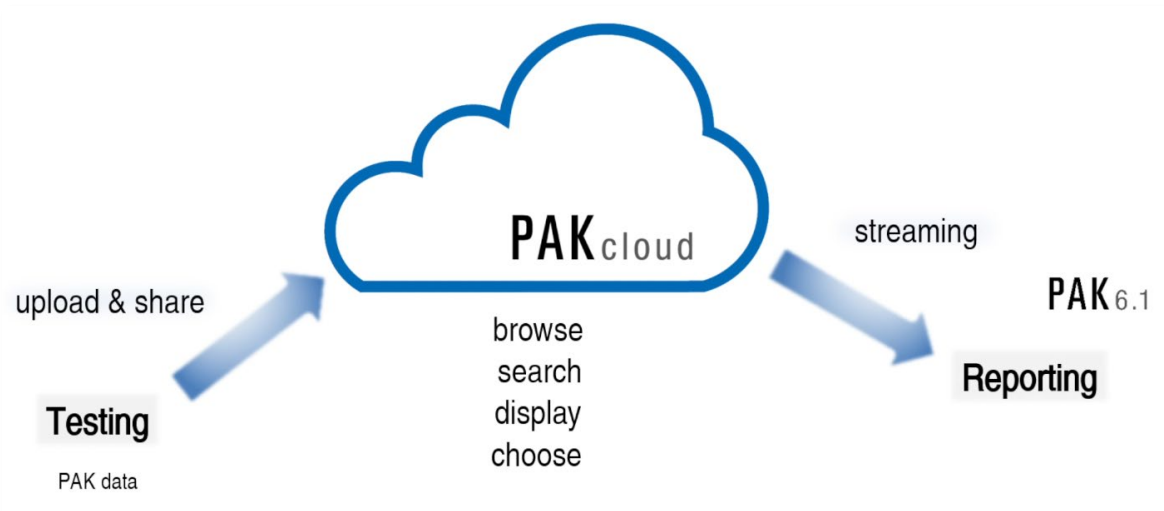
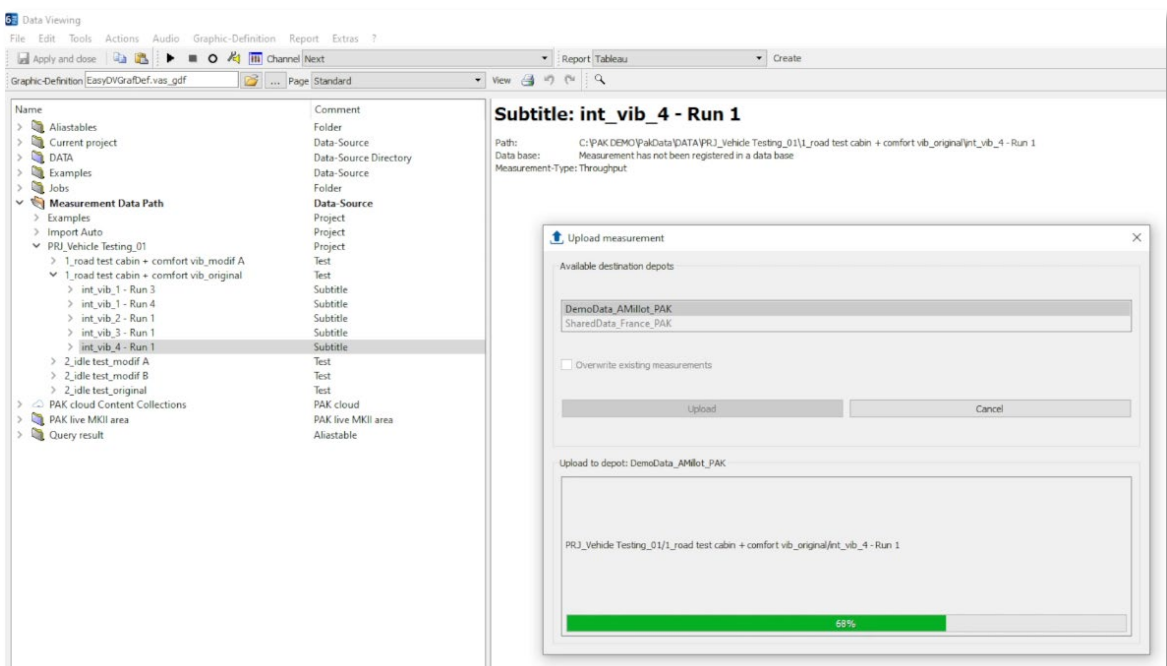


DATA MANAGEMENT WITH PAK CLOUD

1. PAK CLOUD USE CASE



2. UPLOAD AND SHARE



3. BROWSE AND SEARCH

The screenshot shows the PAKcloud interface with a search bar containing 'PRJ_23'. Below the search bar, there are tabs for 'Hierarchy' and 'Chronology'. The 'Hierarchy' tab is active, showing a tree view with 'SharedData_France_PAK' and 'DemoData_AMilot_PAK'. The main area displays a table of search results:

Subtitle	Depot name	Registration
TSN002_Component_RunUp_06	SharedData_France_PAK	
TSN001_Component_RunUp_04	SharedData_France_PAK	
TSN002_Component_RunUp_05	SharedData_France_PAK	
TSN001_Component_RunUp_03	SharedData_France_PAK	
TSN001_Component_RunUp_02	SharedData_France_PAK	
TSN002_Powertrain_RunUp_05	SharedData_France_PAK	
TSN002_Powertrain_RunUp_06	SharedData_France_PAK	
TSN003_Vehicle_RunUp_01	SharedData_France_PAK	VINXYZ
TSN003_Vehicle_RunUp_02	SharedData_France_PAK	VINXYZ
TSN003_Vehicle_RunUp_03	SharedData_France_PAK	VINXYZ
int_vib_1 - Run 3	DemoData_AMilot_PAK	VHT_2018
int_vib_1 - Run 4	DemoData_AMilot_PAK	VHT_2018
int_vib_3 - Run 1	DemoData_AMilot_PAK	VHT_2018
int_vib_2 - Run 1	DemoData_AMilot_PAK	VHT_2018
int_vib_4 - Run 1	DemoData_AMilot_PAK	VHT_2018
int_vib_2 - Run 2	DemoData_AMilot_PAK	VHT_2018
int_vib_2 - Run 1	DemoData_AMilot_PAK	VHT_2018

At the bottom right of the table, it says '17 of 17 results loaded'.

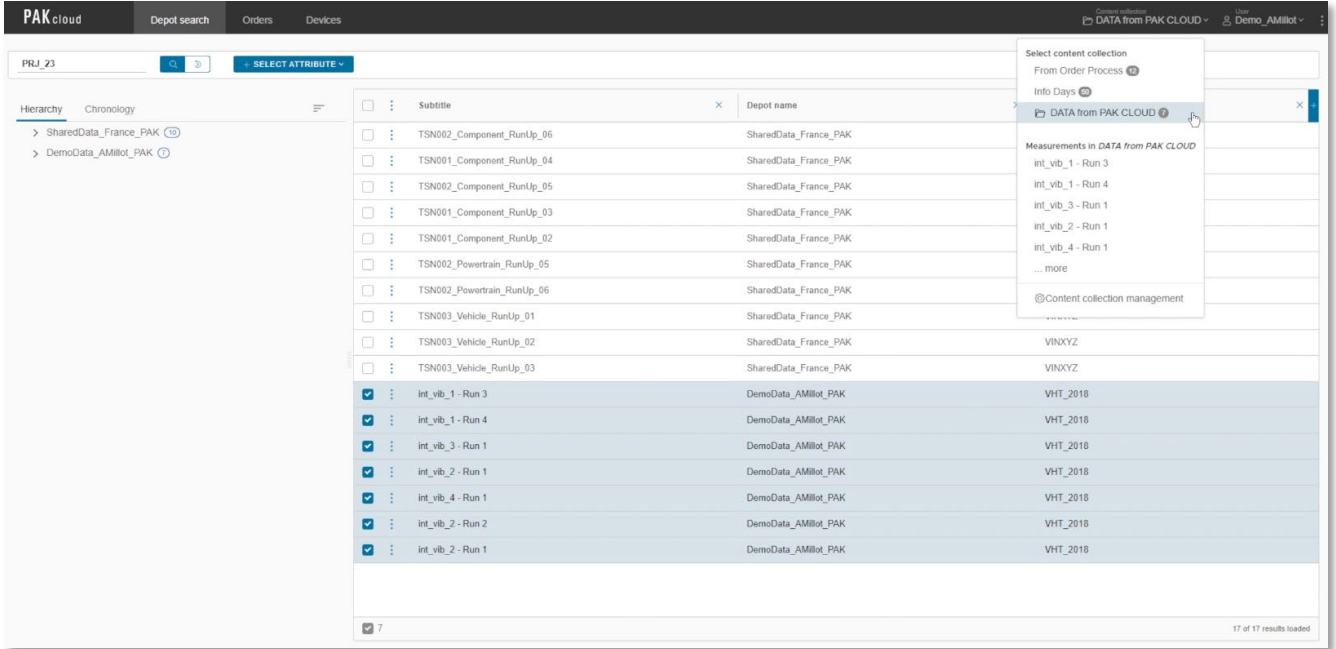
4. DISPLAY

The screenshot shows the Analysis Editor interface. On the left, there are settings for the analysis:

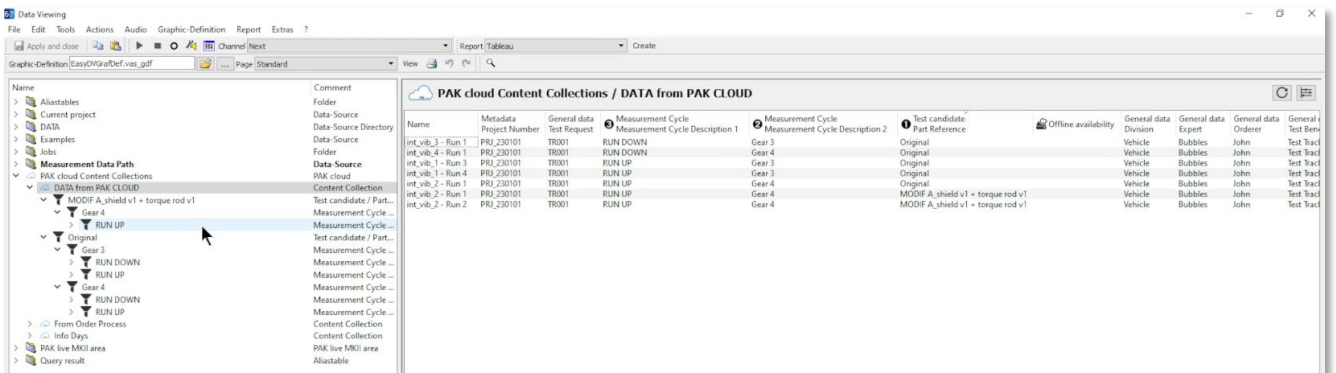
- Formula: APS
- Datasources: ARG: ACCEL - THROUGHPUT
- Track Type: Time
- Trackdelta: 0.1 (Delta of track parameter time)
- Trackstart: MIN (Start value of track parameter time)
- Block size: 16384
- Window Type: Hanning (HANN)

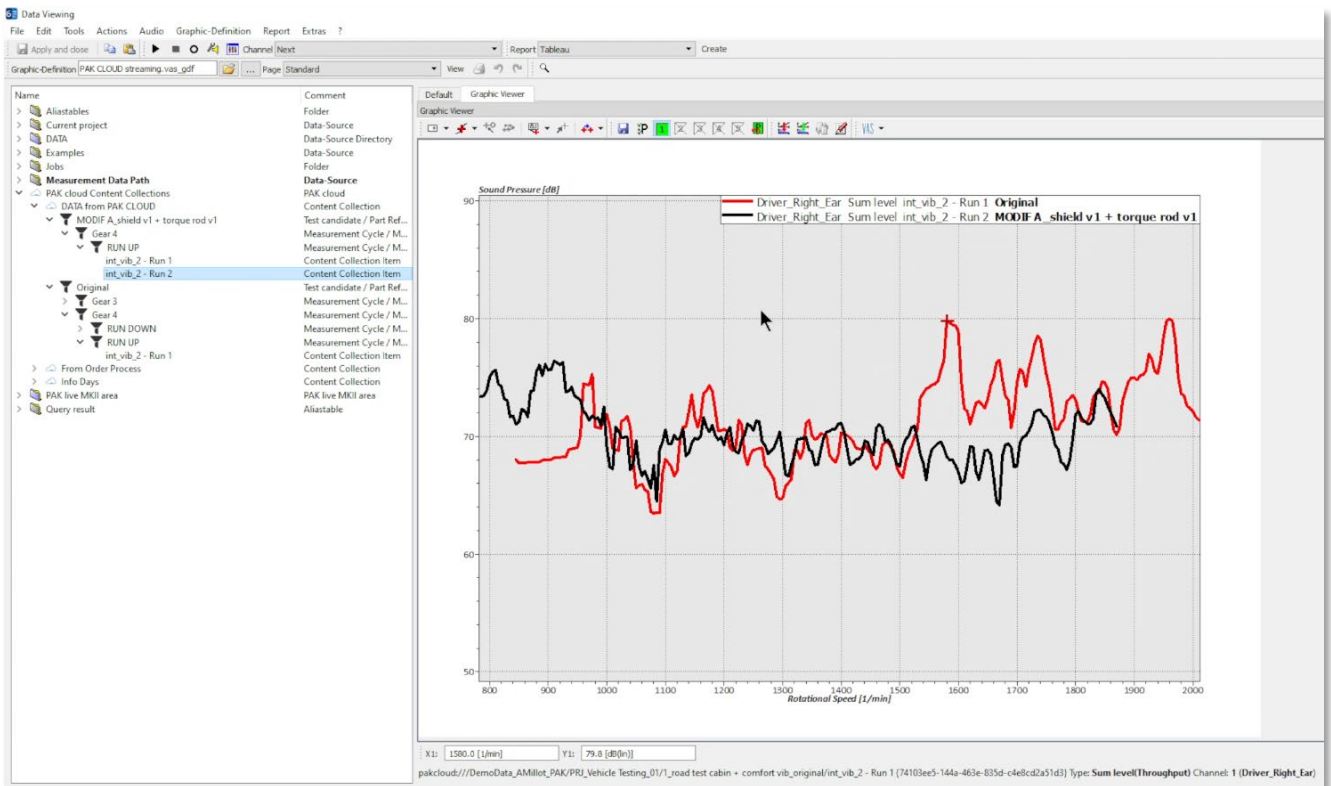
At the bottom left, there is a 'RUN PROCESSING' button. The main area displays a spectrogram titled 'Stream Processed [+Z] Acceleration - APS'. The X-axis is 'Frequency [Hz]' ranging from 100 to 1700. The Y-axis is 'Time [s]' ranging from 1.0 to 12.0. A color scale on the right indicates 'dB' levels from 0.0 to 10.0. The spectrogram shows a complex pattern of energy over time and frequency.

5. CHOOSE



6. STREAMING & REPORTING





Subscribe to our [Newsletter](#) to get the latest stories and access the [PAK Tips Archive](#). Sign up for our video and presentation library [myVAS](#) to stay up to date on our innovations.

Müller-BBM VibroAkustik Systeme GmbH | Helmut-A.-Müller-Straße 1-5 | 82152 Planegg (Germany)
Tel. +49 89 264860 – 0 | info.de@mbbm-vas.com | www.mbbm-vas.com

