

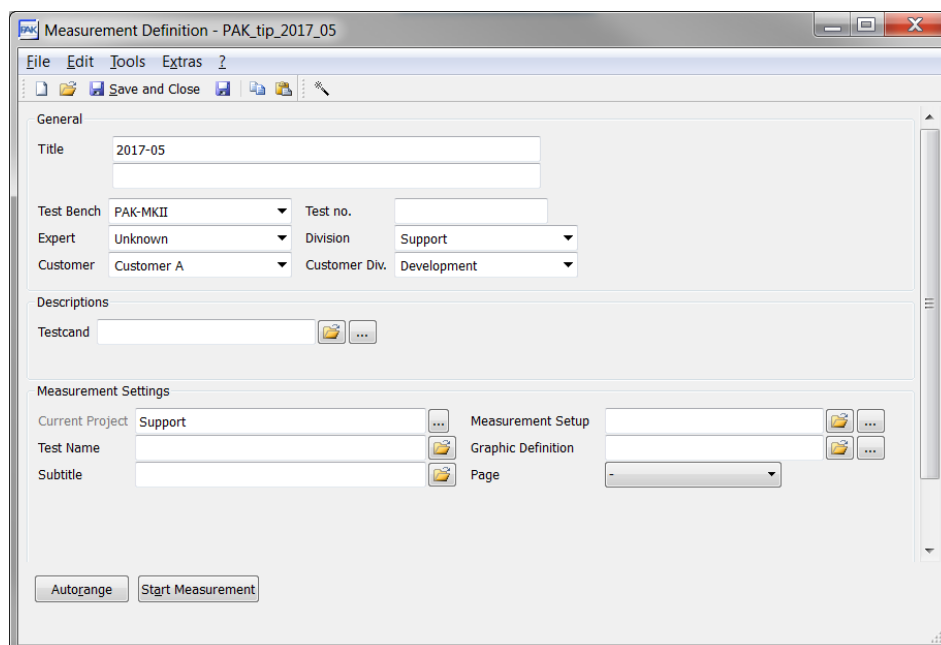
TRACK QUANTITY EDITOR

This tip shows a new functionality of PAK5.9 named « Track quantity editor ». This editor is available during a measurement in the Pre-run mode in order to modify the tracking parameters of the setup without closing the measurement.

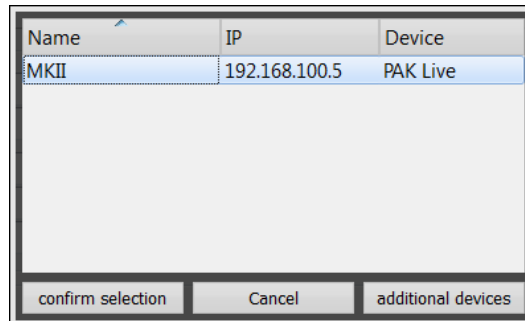
1. SETTINGS

Example: we would like to measure one microphone and one RPM channel.

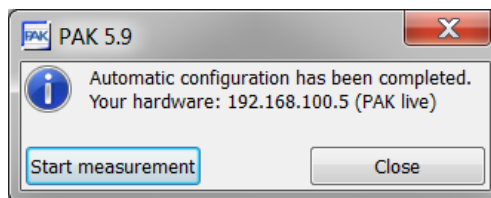
The settings are made with the live mode and the « Automatic configuration ». The “Live” mode is available only on the G2 hardware but you could also make this measurement with the “classic” mode of PAK. If you need more information regarding the LIVE and the G2 Hardware, please contact us with pak-support@muellerbbm-vas.fr.



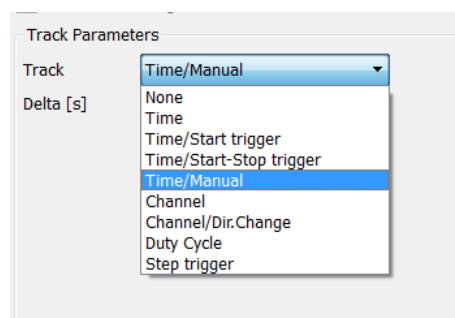
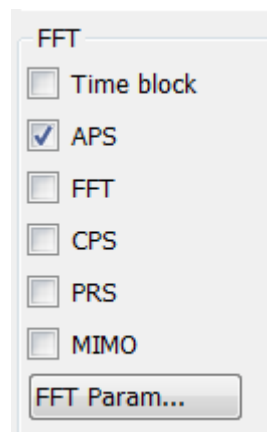
The automatic configuration is set thanks to the magic wand: 



With « confirm selection », you can directly start the measurement but we will prefer to make some changes in the setup and graphic definition.



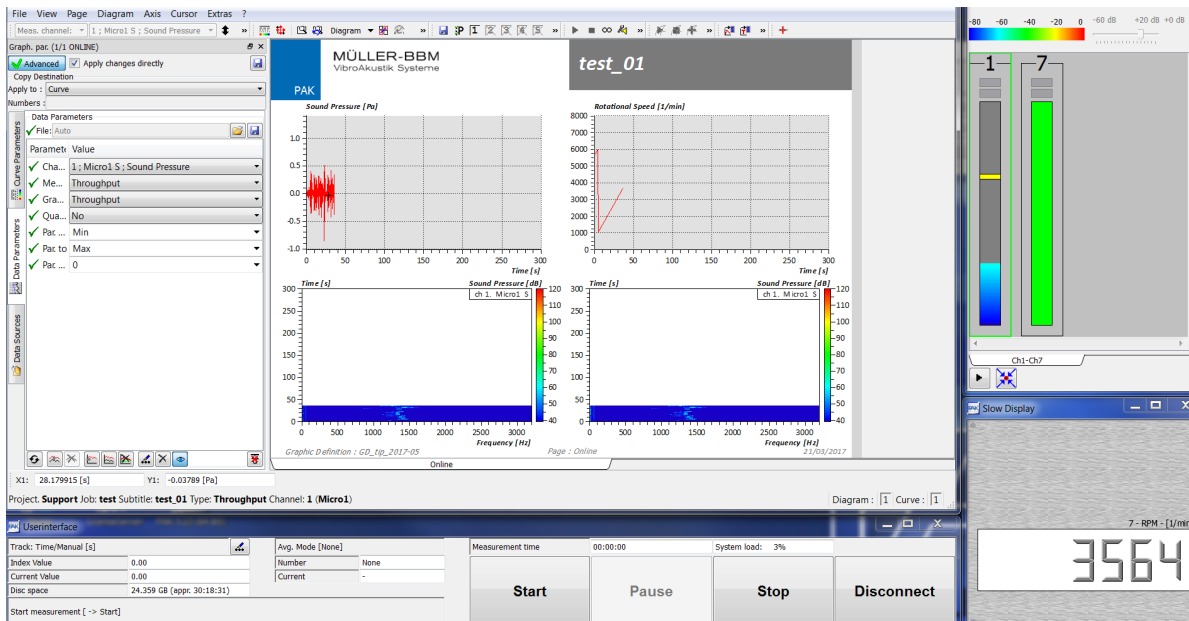
In the setup, we select the APS analysis with a block duration of 1s (frequency resolution of 1Hz) and we choose the tracking « Time/Manual ».



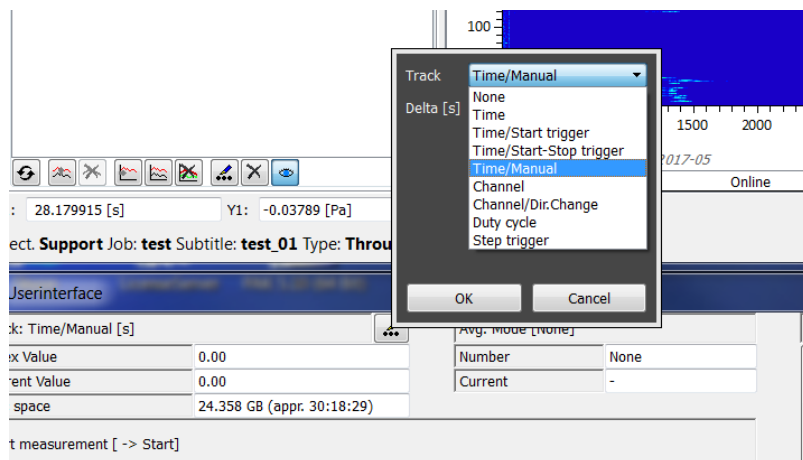
In the « graphic definition », we would like to plot the throughput of the microphone, the RPM slow quantity, the APS of the microphone function of time and function of the « current track quantity ».

	Active	Diagr.	Curve	Definition	Name of Measurement	Data Definition (Info)
1	<input checked="" type="checkbox"/>	1	1		Current Test Data	Throughput Chan. 1 [Micro1] S (1D)
2	<input checked="" type="checkbox"/>	2	1		Current Test Data	Slow quantity Chan. 7 [RPM] S (2D)
3	<input checked="" type="checkbox"/>	3	1		Current Test Data	APS Chan. 1 [Micro1] S (2D)
4	<input checked="" type="checkbox"/>	4	1		Current Test Data	APS Chan. 1 [Micro1] S (2D)

« Start measurement »



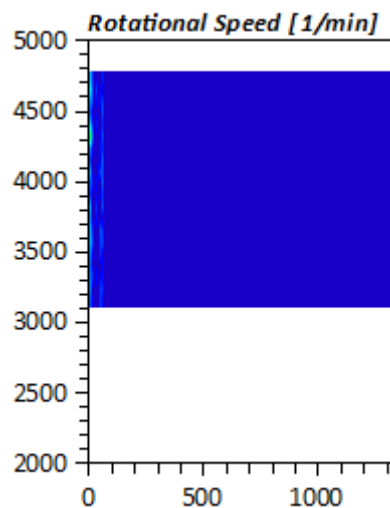
Click on the « ... » in the user interface and you could change the tracking and select “Channel”.



We have to define the settings of the tracking:

Track	Channel
Quantity	Rotational Speed
Track channel	7 ; RPM ; Rotational Sp
Start [1/min]	2000
Stop [1/min]	5000
Delta [1/min]	10
Runup/Rundown [count]	None
<input type="button" value="OK"/> <input type="button" value="Cancel"/>	

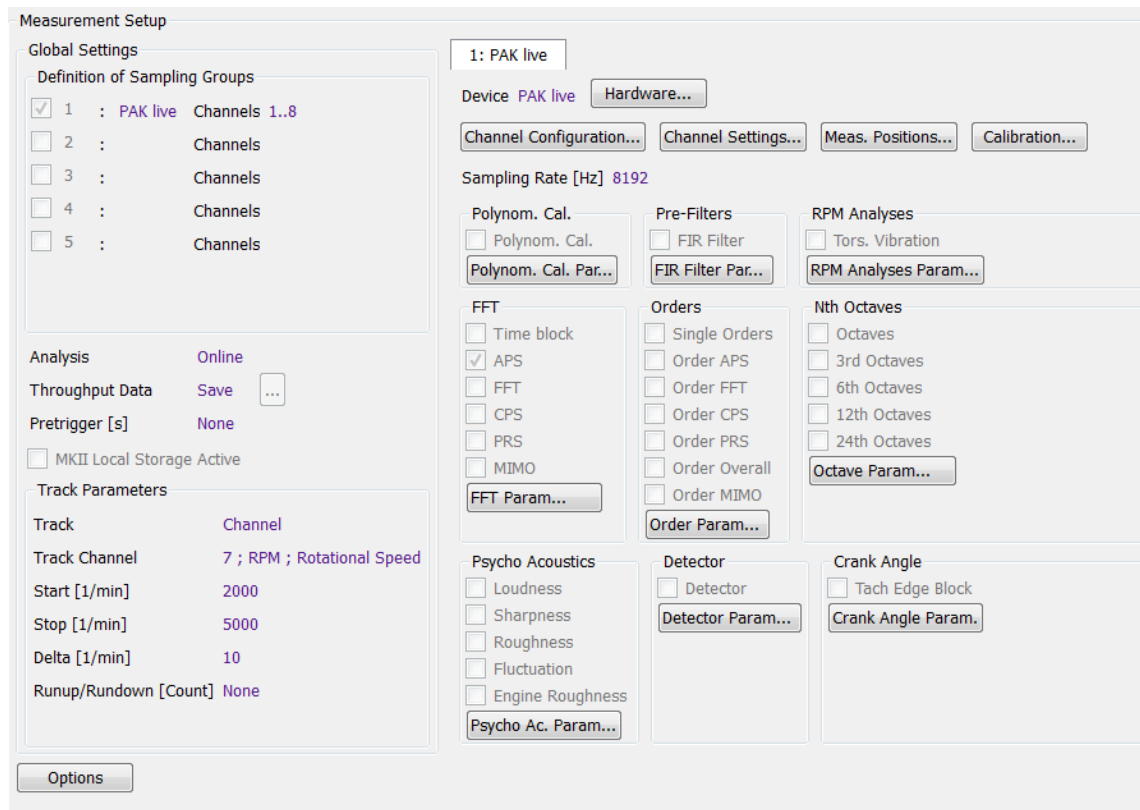
With « OK », the diagram 4 (APS function of the « current track quantity ») changes its y-axis from time to rpm.



We start the measurement with this tracking.

The measurement stops, we open the « data viewing » in order to see the « result » of our signal acquisition. The “Track parameter” of the setup is “Channel”.

▲ test_01	Subtitle
▲ 2017-05	Meas.-Definition
Messtext.def	Meas_Text
Off	Env.Condition
Off	Meas_Cycle
Testcand.def	Testcand
Tip-05-2017	Measurement Setup



PREVIEW

In the next June issue of your PAK Tip: **PAK capture App**

MÜLLER-BBM VibroAkustik Systeme

Parc Saint-Christophe
10, avenue de l'Entreprise
95865 CERGY-PONTOISE Cedex

Tél. standard 01 34 22 58 84

Télécopie 01 34 22 58 85

Tél. hotline 01 34 22 58 86

www.muellerbbm-vas.fr